

**ENG**

**CRANES**

Design, engineering, manufacture

**ETL 243**

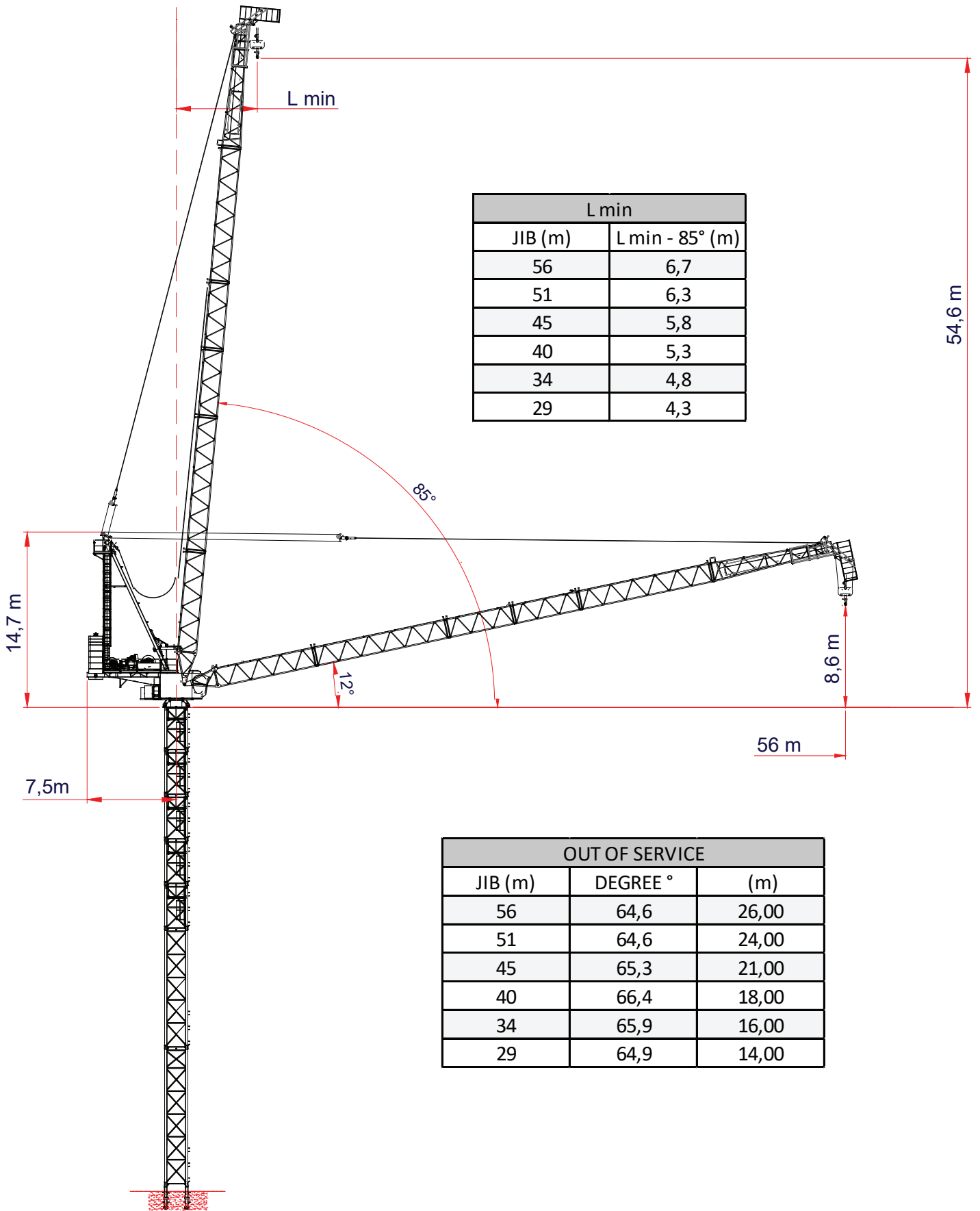
**16t**

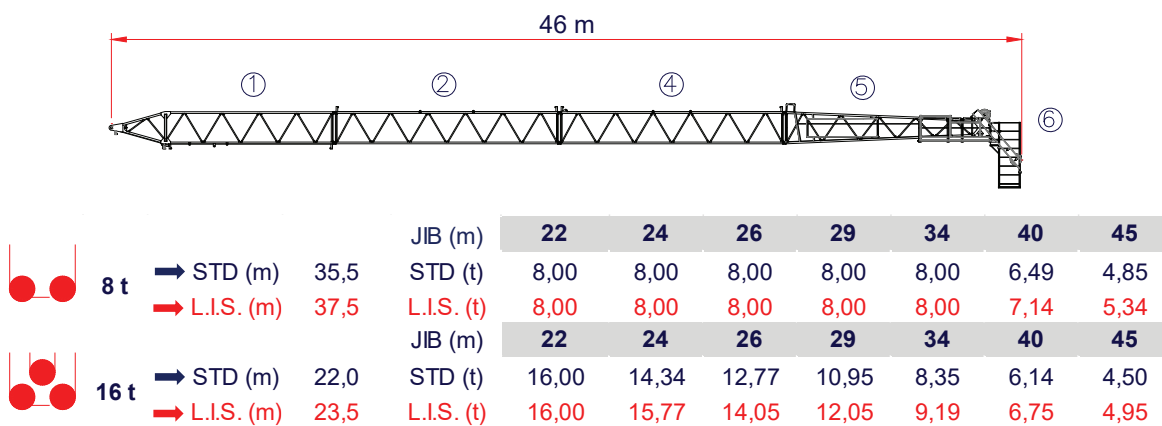
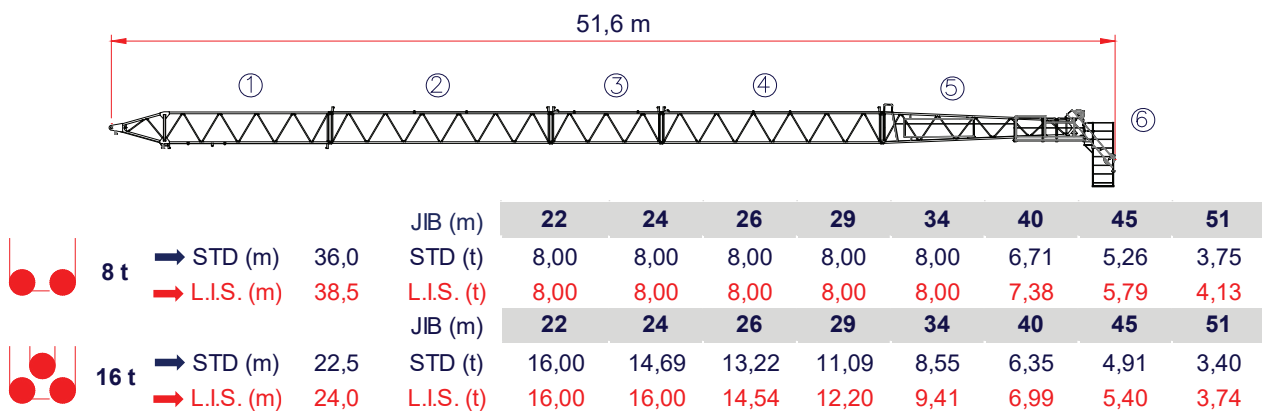
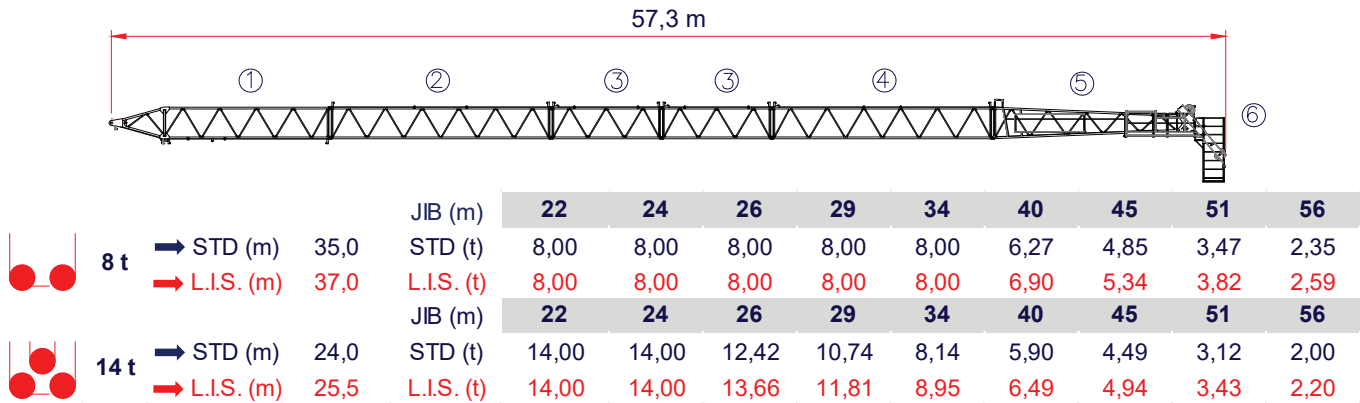
2021

**ENG**  
**CRANES**



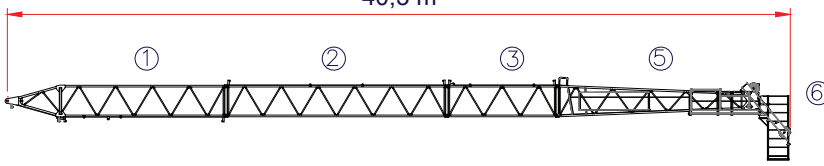
EN14439-C25  
FEM1.001-A4





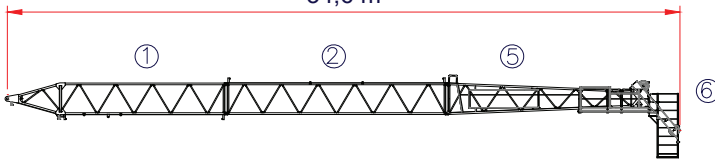
**L.I.S. = Load Increase System**  
 All intermediate loads can be increased till a maximum of 10% if the crane is equipped with L.I.S.  
 Con il sistema L.I.S. tutte le portate intermedie possono essere aumentate fino ad un massimo del 10%

40,3 m



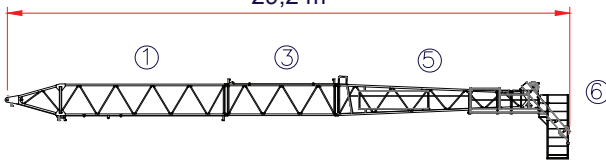
		JIB (m)							
		22	24	26	29	34	40		
8 t	→ STD (m)	35,0	STD (t)	8,00	8,00	8,00	8,00	8,00	6,15
	→ L.I.S. (m)	37,0	L.I.S. (t)	8,00	8,00	8,00	8,00	8,00	6,77
		JIB (m)							
		22	24	26	29	34	40		
16 t	→ STD (m)	21,5	STD (t)	15,87	13,98	12,40	10,64	8,22	5,80
	→ L.I.S. (m)	23,5	L.I.S. (t)	16,00	15,38	13,64	11,70	9,04	6,38

34,6 m



		JIB (m)						
		22	24	26	29	34		
8 t	→ STD (m)	34,0	STD (t)	8,00	8,00	8,00	8,00	
	→ L.I.S. (m)	34,0	L.I.S. (t)	8,00	8,00	8,00	8,00	
		JIB (m)						
		22	24	26	29	34		
16 t	→ STD (m)	21,5	STD (t)	15,82	13,98	12,62	10,69	7,70
	→ L.I.S. (m)	23,0	L.I.S. (t)	16,00	15,38	13,88	11,76	8,47

29,2 m


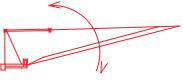



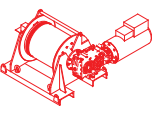




		JIB (m)					
		22	24	26	29		
8 t	→ STD (m)	29,0	STD (t)	8,00	8,00	8,00	8,00
	→ L.I.S. (m)	29,0	L.I.S. (t)	8,00	8,00	8,00	8,00
		JIB (m)					
		22	24	26	29		
16 t	→ STD (m)	22,0	STD (t)	16,00	14,55	12,89	10,60
	→ L.I.S. (m)	24,0	L.I.S. (t)	16,00	16,00	14,18	11,66

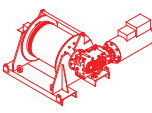




Lifting capacities valid up to 50 m hoisting height. Over 50 m hoisting height, the lifting capacity is reduced by additional rope weight.  
 Portate valide fino a 50 m di altezza di sollevamento. Oltre i 50 m si riduce la portata a causa del peso della fune.

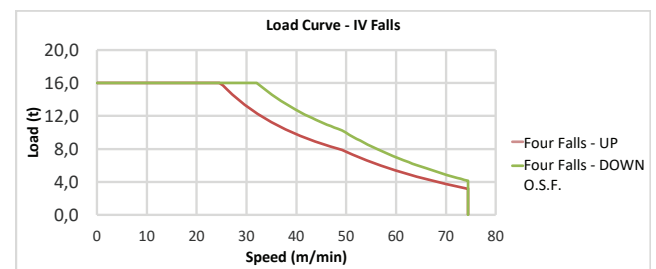
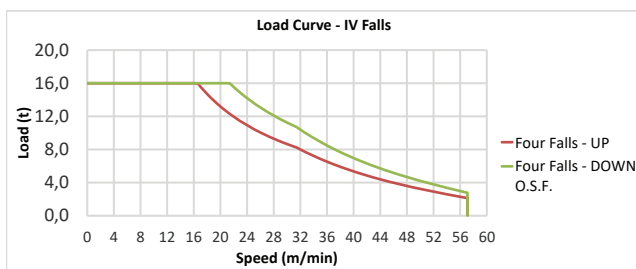
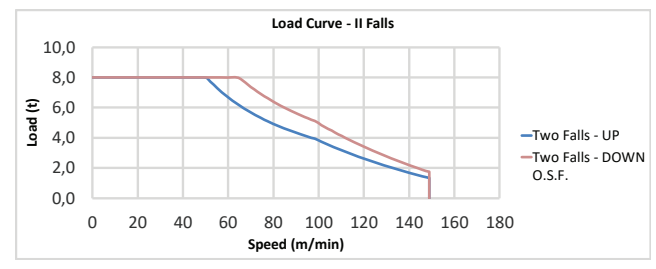
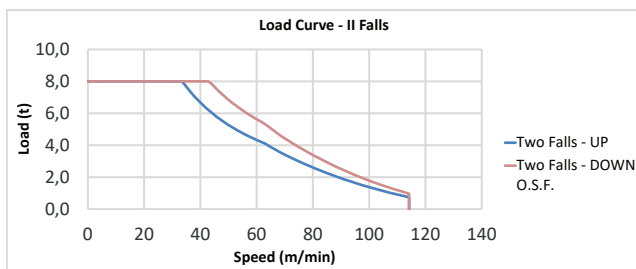
ETL 243

LOAD CHART

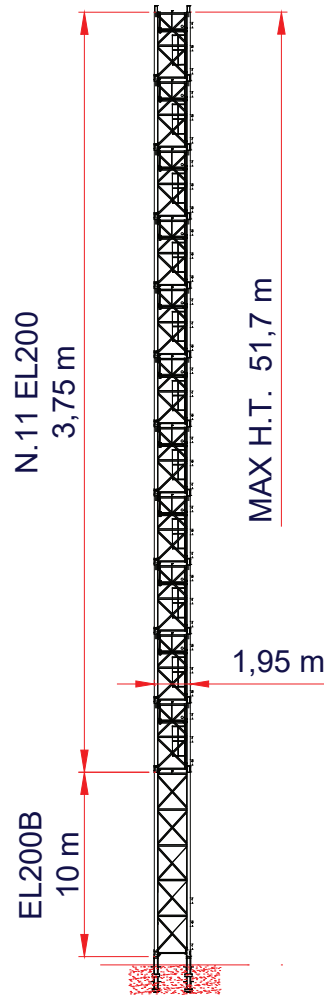
		Speed - Velocità	Power - Potenza
Rotazione Slewing		0 → 0,70 r.p.m.	2 x 5,5 kW
Luffing Impennamento		1,5 m/min	55 kW
Rail Traslazione		ON REQUEST	

Type Tipo 	Power - Potenza		Rope - Fune
	hp - CV PS - ch	kW	m
HW1655916	75	55	919
Layer - Strati	N. 6		
Stepless - Reg. Continua 			
kg	m/min		
8000	0 → 42		
962	0 → 114		
Stepless - Reg. Continua 			
16000	0 → 21		
2769	0 → 57		
Maximum height - Massima altezza -	 455 m	 227 m	
Total installed power Forza motrice totale	55 kW (75 hp) 150 kVA - 400/480 V - 50/60 Hz ± 5%    ± 2%		

Type Tipo 	Power - Potenza		Rope - Fune
	hp - CV PS - ch	kW	m
HW1680916	109	80	919
Layer - Strati	N. 6		
Stepless - Reg. Continua 			
kg	m/min		
8000	0 → 60		
1742	0 → 149		
Stepless - Reg. Continua 			
16000	0 → 32		
4134	0 → 74		
Maximum height - Massima altezza -	 455 m	 227 m	
Total installed power Forza motrice totale	80 kW (109 hp) 182 kVA - 400/480 V - 50/60 Hz ± 5%    ± 2%		

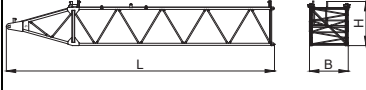
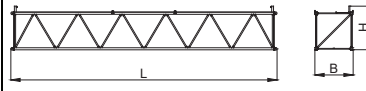
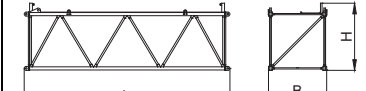
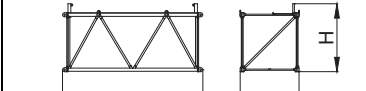

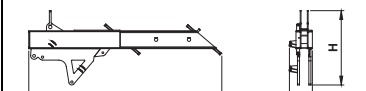
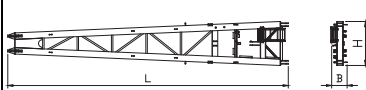
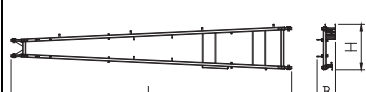



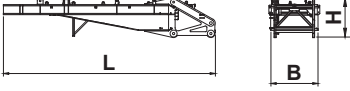
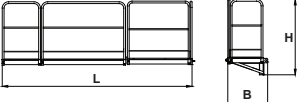
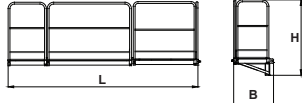
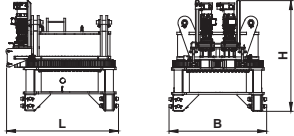
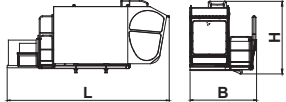
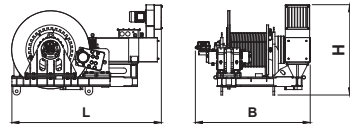
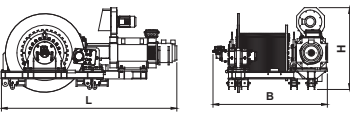
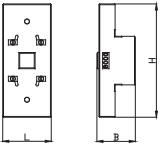
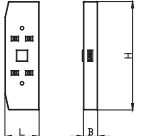
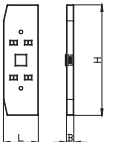
**O.S.F.** = Over speed frequency  
All down speeds can be increased till a maximum of 30% if the crane is equipped with O.S.F.



JIB (m)	H.T. (m)	H.U.H. (m) 12°	H.U.H. (m) 85°
29	51,70	54,40	77,50
34	47,95	51,85	79,35
40	47,95	53,05	85,05
45	44,20	50,50	86,90
51	40,45	47,95	88,85
56	40,45	49,05	94,45

*H.T. Height Tower*  
*H.U.H. Height Under Hook*

Q.ty Q.tà	Description Descrizione	Sketch Figura	Length Lunghezza [L]	Width Larghezza [B]	Height Altezza [H]	Single Weight Peso Unitario
Jib/Braccio			[m]	[m]	[m]	[t]
1	Jib section Elemento Braccio 1		11,43	1,80	1,88	1,85
2	Jib section Elemento Braccio 2 - 4		11,48	1,64	1,89	1,43
2	Jib section Elemento Braccio 3		5,80	1,65	1,89	0,77
1	Jib section Elemento Braccio 3A		3,80	1,65	1,89	0,54
1	Jib section Elemento Braccio 5		11,51	1,64	2,04	1,25
1	Tip Puntale		3,71	0,32	1,48	0,91
1	A-Frame inclined panel Pannello anteriore		11,42	0,68	1,79	3,02
1	A-Frame vertical panel Pannello posteriore		11,0	0,72	1,78	0,94
1	Tip Puntale		1,80	0,63	0,72	0,78

Q.ty Q.tà	Description Descrizione	Sketch Figura	Length Lunghezza [L]	Width Larghezza [B]	Height Altezza [H]	Single Weight Peso Unitario
Counter-jib/Controfreccia			[m]	[m]	[m]	[t]
1	Machinery deck Plancia macchinari		8,40	1,62	1,59	6,54
2	Balcony Ballatoio 1		2,82	0,62	1,53	0,13
2	Balcony Ballatoio 2		3,37	0,62	1,53	0,17
1	Slewing-group Gruppo Girevole		2,50	2,12	2,46	6,27
1	Cabin Platform Ballatoio Cabina		5,70	2,32	2,57	4,70
Winch / Argani			[m]	[m]	[m]	[t]
1	Luffing Winch Argano di Brandeggio		2,20	1,53	1,33	2,27
1	Hoisting Winch Argano Sollevamento		3,20	2,50	1,81	5,87
Counter-jib Ballast / Zavorra di Controfreccia			[m]	[m]	[m]	[t]
1	Counter-jib Ballast Zavorra di Controfreccia A6000		2,80	0,90	1,20	6,00
3	Counter-jib Ballast Zavorra di Controfreccia B6300		3,80	0,54	1,20	6,30
3	Counter-jib Ballast Zavorra di Controfreccia C3150		2,80	0,29	1,20	3,15





# ENG

---

## CRANES

Design, engineering, manufacture

### ENG CRANES SRL

Via Limido 1/E  
42024 Castelnovo di Sotto - RE  
Italy

Info + 39 0522 1495518

Fax + 39 0522 1495601

[commerciale@engcranes.com](mailto:commerciale@engcranes.com)

[www.engcranes.com](http://www.engcranes.com)

Specifications and data not binding subject to modification without notice.

Dati illustrativi non impegnativi con riserva di modifica senza preavviso.

Données techniques seulement indicatives modifications réservées sans préavis.

Angaben und Beschreib ungunverbindlich andreungen vorbehalten ohne weitere mitteilung.